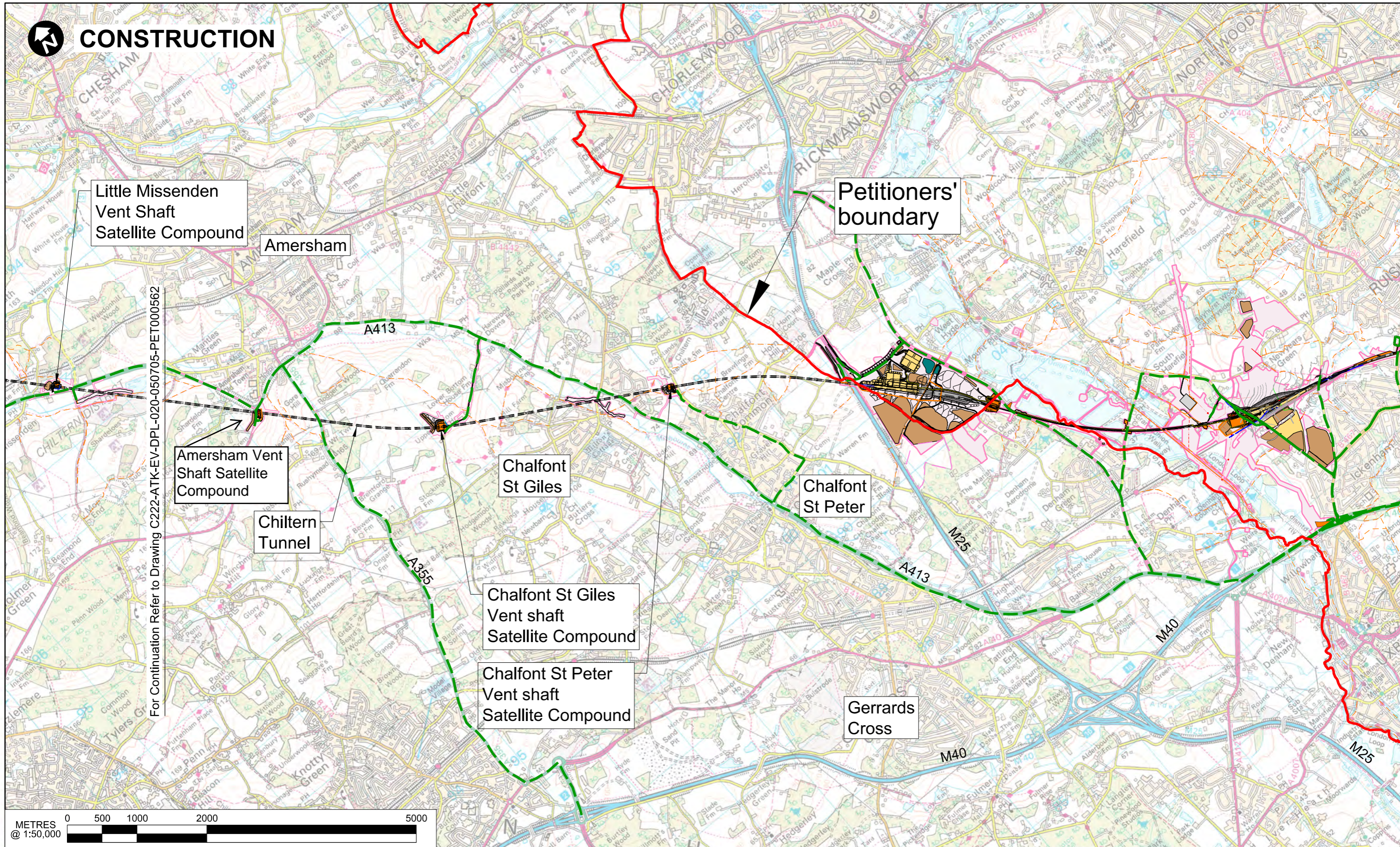


CONSTRUCTION



For Continuation Refer to Drawing C222-ATK-EV-DPL-020-050705-PET000562



P00.1	FIRST DRAWN				
Rev	Description	Drawn	Checked	Con App	HS2 App

HS2 accepts no responsibility for any circumstances which arise from the reproduction of this document after alteration, amendment or abbreviation or if it is issued in part or issued incompletely in any way.

© Crown Copyright and database right 2014. All rights reserved. Ordnance Survey Licence number 100049190

© Crown Copyright material is reproduced with the permission of Land Registry under delegated authority from the Controller of HMSO.

This material was last updated on 2014 and may not be copied, distributed, sold or published without the formal permission of Land Registry. Only an official copy of a title plan or register obtained from the Land Registry may be used for legal or other official purposes.

Scale with caution as distortion can occur.

Legends/Notes:

	Satellite construction compound		Temporary site access route / haul route
	Main construction compound		Construction traffic route
	Tunnel portal		Existing public right of way (PRoW)
	Rail alignment formation		New, diverted or realigned PRoW
	Tunnels external extent		Stopped-up PRoW
	Rail alignment		Temporary material stockpile
	Engineering earthworks		Buckinghamshire County Council Boundary
	Landscape earthworks		Temporary PRoW
	Land potentially required during construction		

Registered in England
Registration No. 06791686
Registered office:
One Canada Square,
London, E14 5AB

Creator/Originator
Atkins

Zone	Country South
Design Stage	DESIGN-FOR-PETITION
Drawing Title	Buckinghamshire County Council Petition HOL0562 Construction Phase - Sheet 1 of 4

Project/Contract	Country South Design		
Discipline/Function	Environmental		
Drawn	IE	Checked	Approved
Date	18/10/2016	Scale	AS SHOWN
		Size	A3
Drawing No.	C222-ATK-EV-DPL-020-050704-PETHOL000562	Rev.	P00.1