



Wendover Parish Council



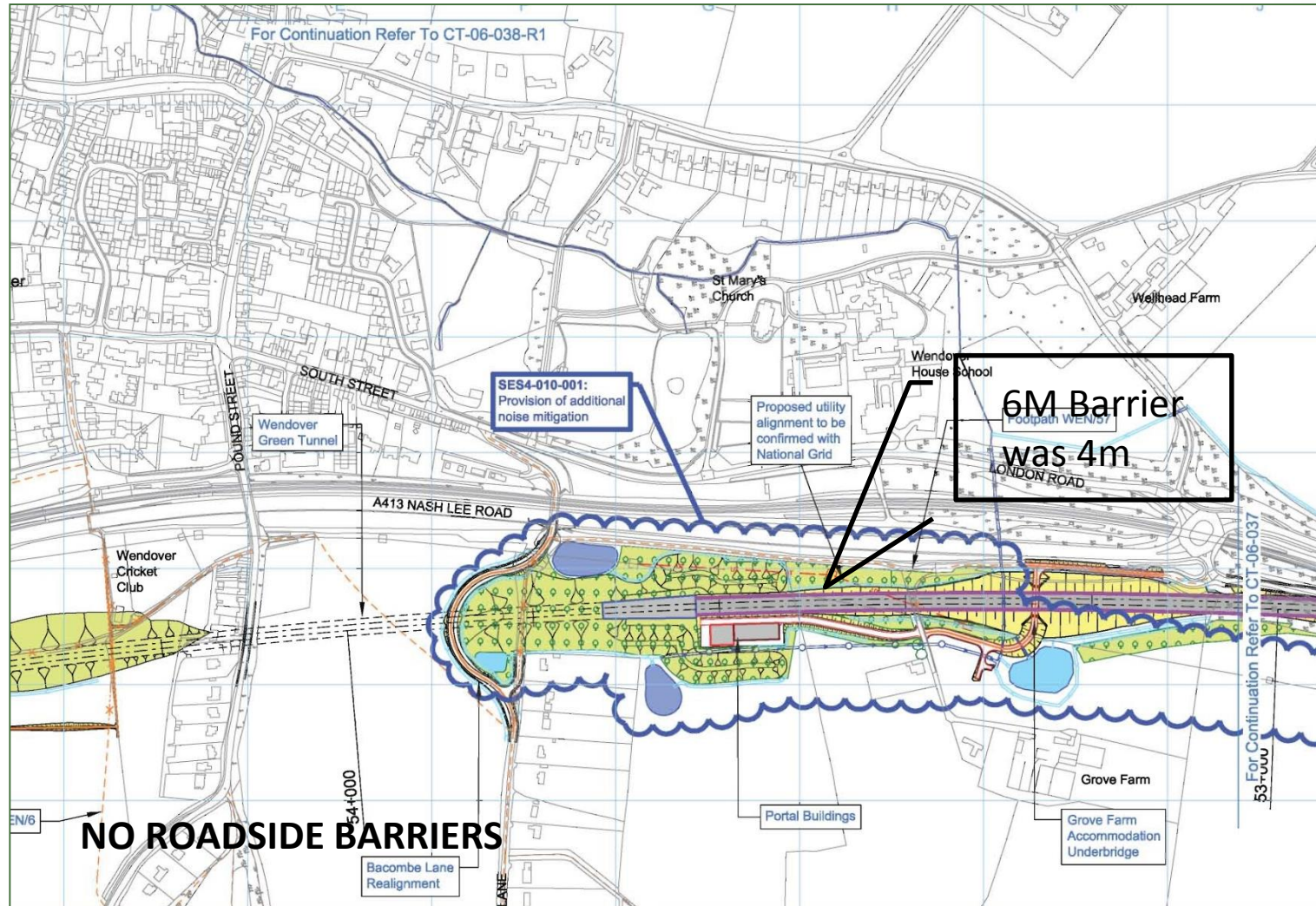
Halton Parish Council

Context of AP5/SES4

“Thirdly, on Wendover, we are minded to recommend a southward extension of the currently proposed green tunnel, unless hs2 report back with a very convincing scheme of further mitigation, on which we expect a report back in September.”

Statement by HS2 Select Committee made on 21st July 2015.

SES 4





6m high barrier....

- Visually uglier
- Higher risk of graffiti
- Bigger negative impact on town and tourism

Pylons

- Chance to bury them has been ignored
- Now making them 16m higher and heavier so they can cross the HS2 route



Business & Tourism in Wendover

Wendover has a high number of tourists

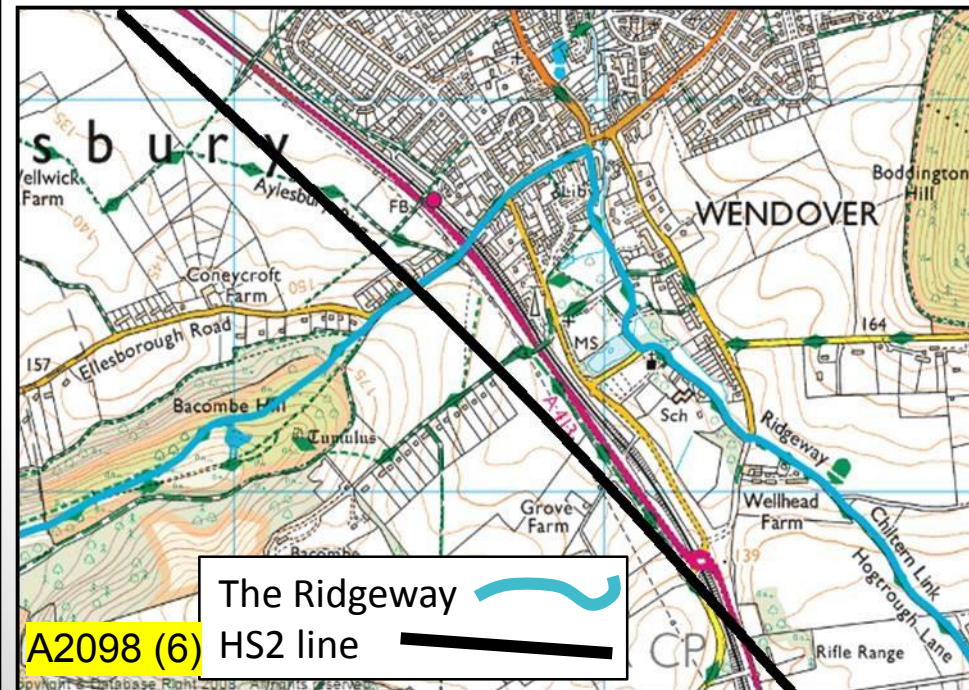
Wendover Woods 300,000 pa

Combe Hill 100,000 pa

RAF Halton Graduations 10,000 pa

Ridgeway walkers 56,000 pa

- Lost visitor spending assessed as £12.8M
- Wendover has a lot of cafes, pubs, restaurants, high end shops and antique shops to cater for tourists
- The Ridgeway goes along the High St and past St Mary's Church
- Any disruption to how they get here, or their enjoyment while they are here, will cause them to stay away



Barrier height and noise

Transmitted noise grows in significance as barriers get higher

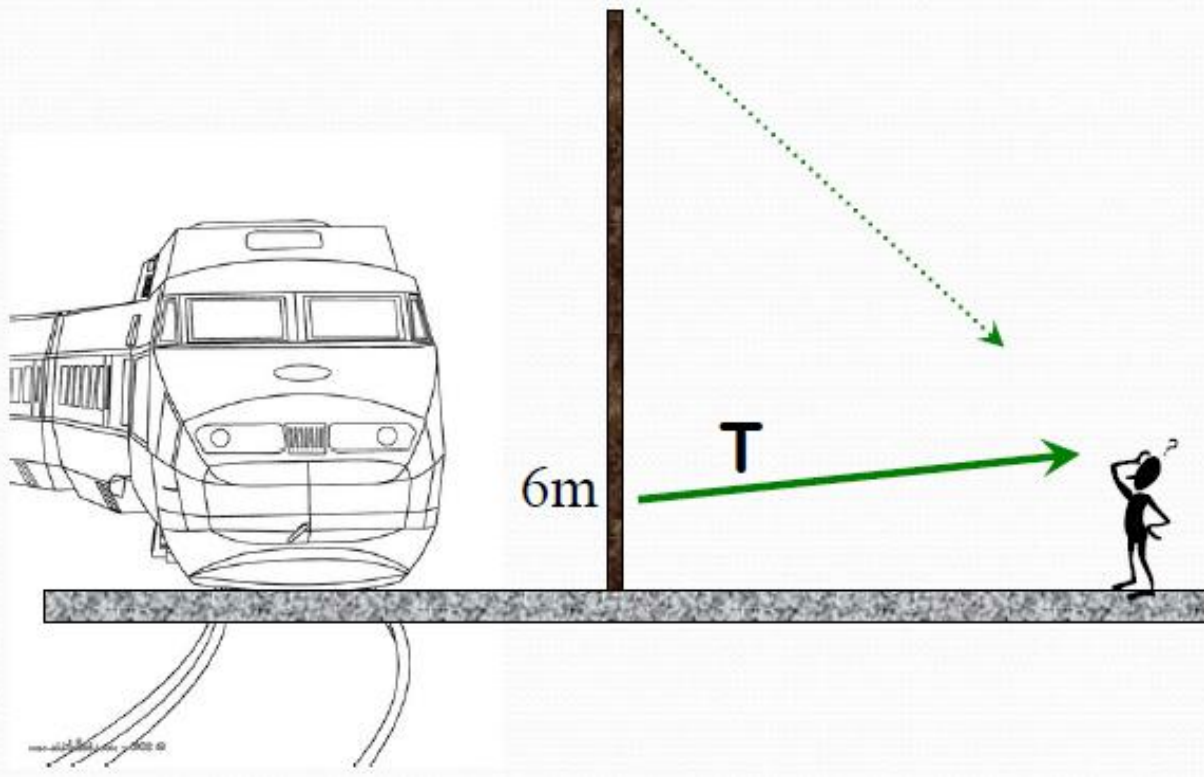
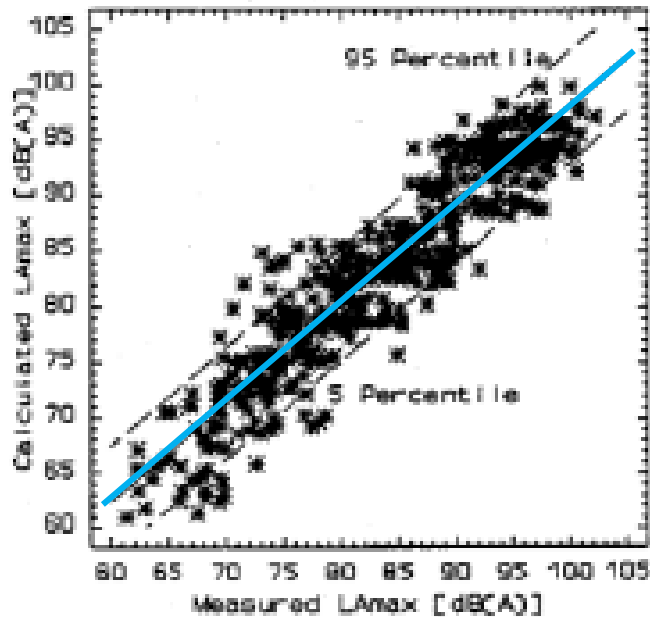


Image courtesy of - Sound Barrier Solution Ltd

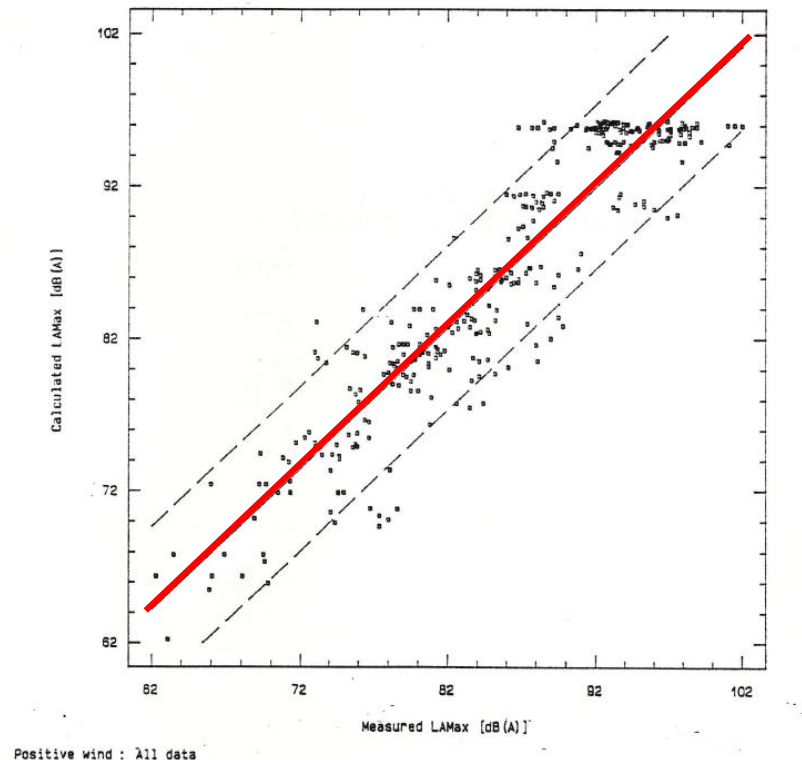
Noise – Even more uncertainty

HS1 data



TGV-A data

Figure 25 : Correlation of Predicted against Measured LAMax levels



Uncertainty with noise predictions

Lack of Trust in Promoter

- When we appeared in September the proposal by the promoter was for barriers, including roadside barriers – now the main petitioning period for Wendover has passed they have disappeared.
- The promoters say they have an agreement with Wendover House School – the school are unaware of this.
- Ignores the Wendover hydrogeological issue
- No response on the issues and concerns raised by the many petitioners from Wendover
- Photo representations are misleading

Our 'Asks'

- Obviously a fully bored tunnel would alleviate these issues
- The promoters deliver on the Select Committee statement of July offering us a balanced and effective solution
- The promoters bury the grid rather than make the pylons higher
- For our issues and concerns to be properly addressed