

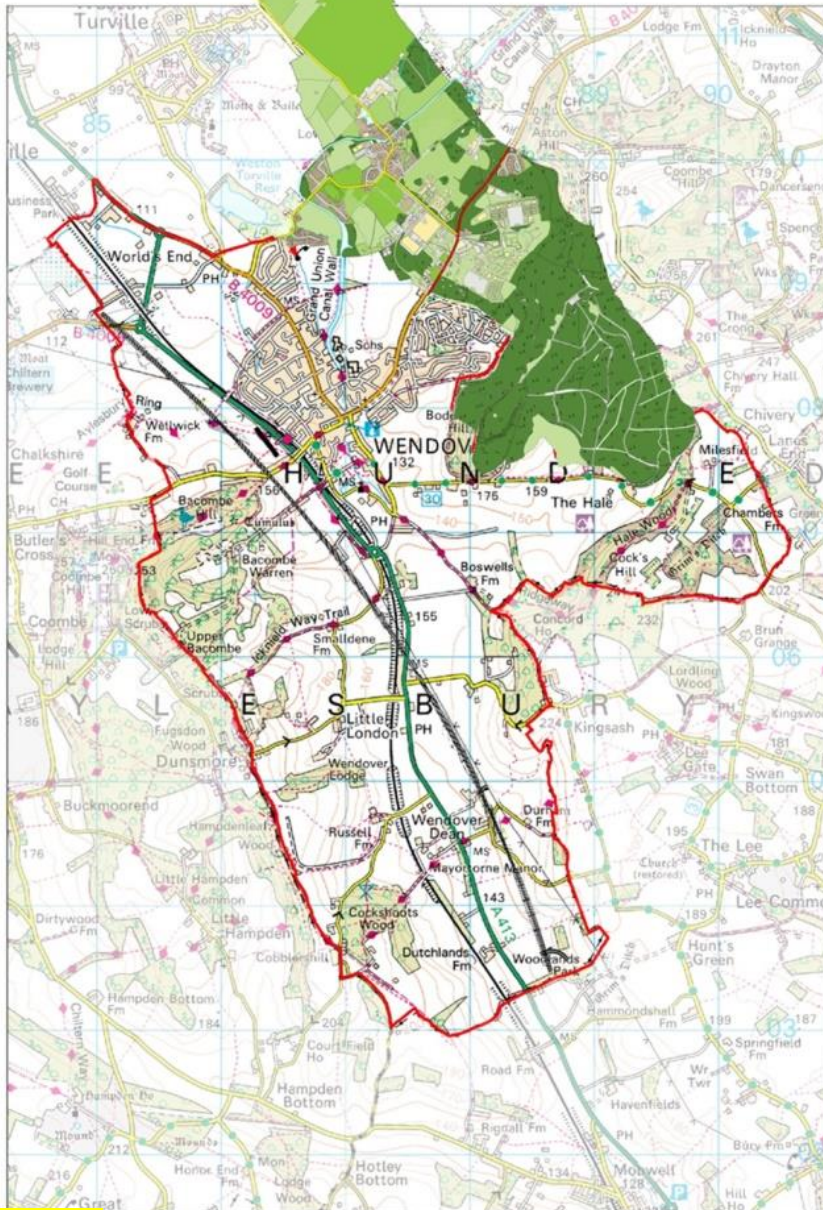
Wendover Parish Council

Halton Parish Council

The Wendover Society

Wendover HS2

Wendover & Halton Parishes

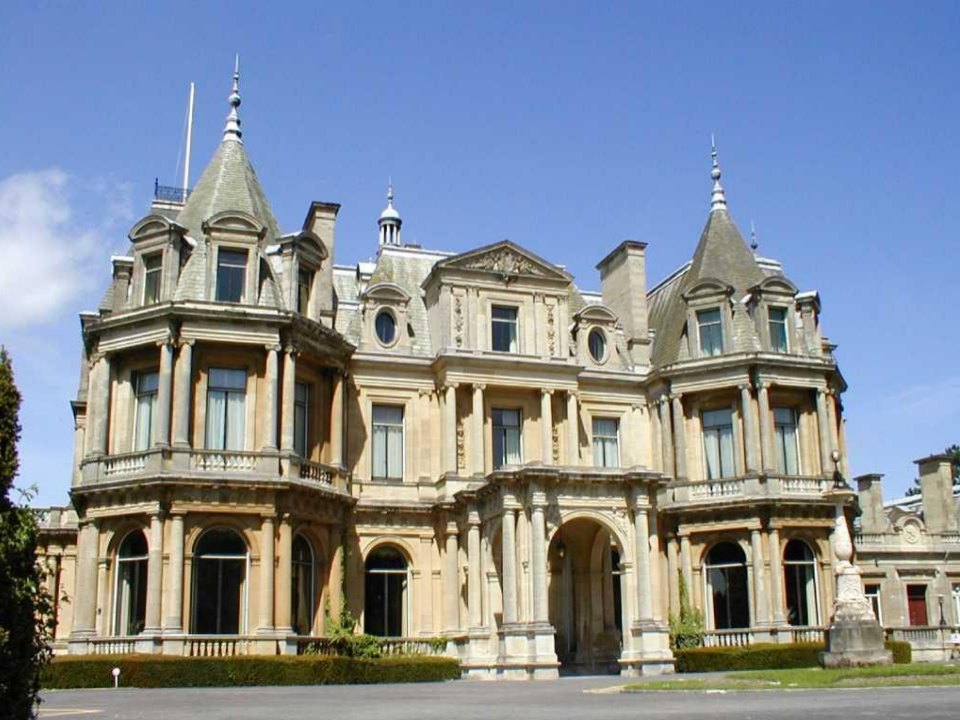


- Population of 8500 and over 3300 houses
- RAF Halton a vital training facility is located in the parishes
- Local economy based on tourism and agriculture
- Wendover has had a weekday market since 1464
- Many historic buildings
- Situated in the Wendover Gap between Wendover Woods and Combe Hill



WENDOVER





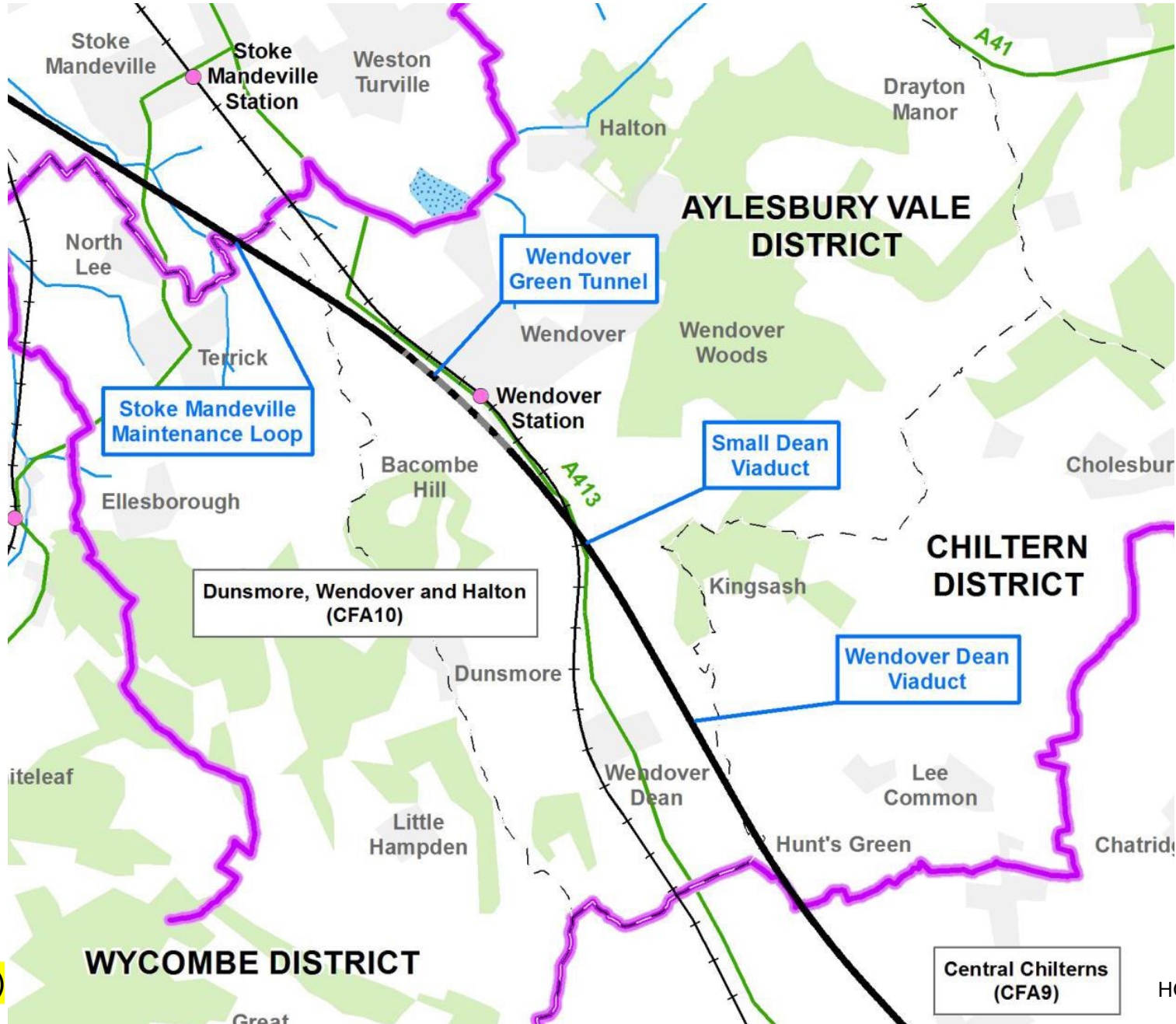
HALTON



A1211 (4)

HOC/00106/0005

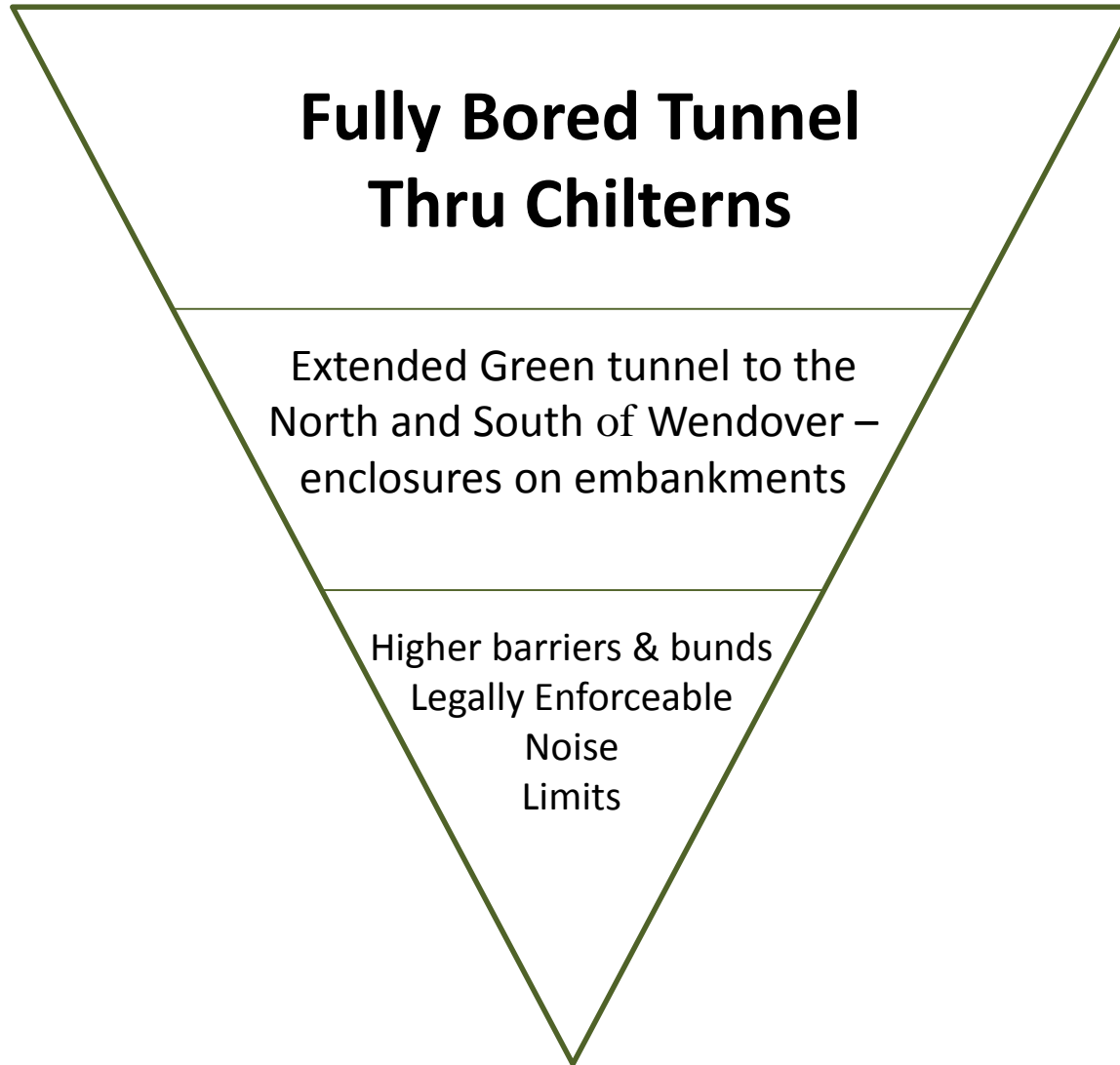
HS2 proposal



A1211 (5)

HOC/00106/0006

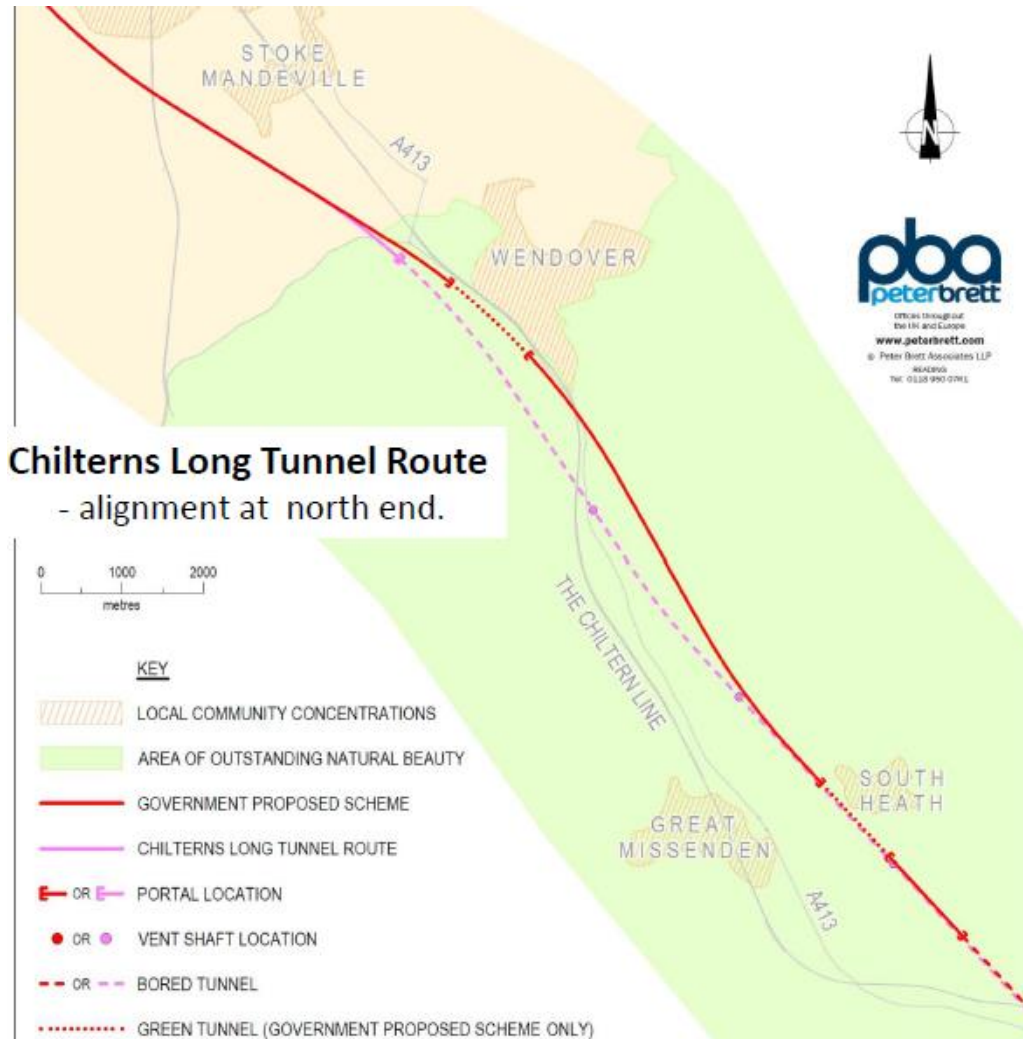
Wendover Asks



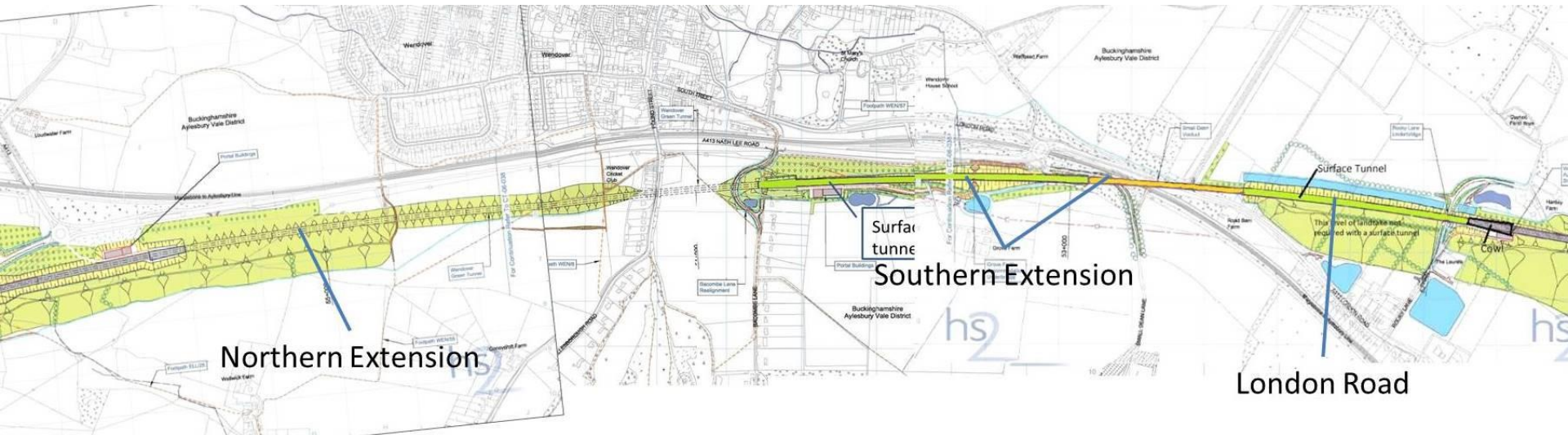
A Bored Tunnel Thru the Chilterns

A bored tunnel through the Chilterns will:

- Save the AONB
- Reduce the risk to the Wendover Arm Canal
- Enable St Mary's Church to be a community centre
- Do away with the noise issue
- Protect Wendover heritage
- Reduce visual blight
- Save Agricultural and tourist businesses
- Remove property blight
- Safeguard people's health



Wendover Cut & Cover Extensions



Northern Extension 500m

Southern Extension

Surface tunnel 700m London Road

Viaduct enclosure 500m Surface tunnel 600m

Impacts on Wendover

- Heritage
- St Mary's
- Tourism
- Blight
- Health
- Wendover Campus School

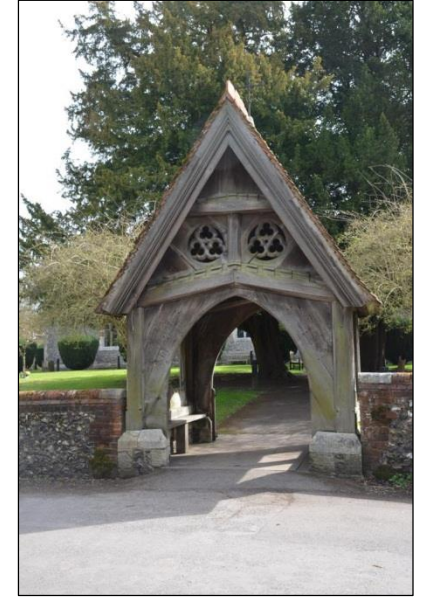
Heritage Impacts



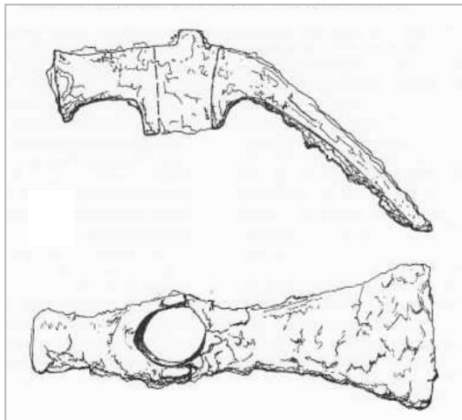
Wendover Clock Tower



High Street, Wendover



St Mary's Church Lychgate



Romano-British Adze Hammer



Grim's Ditch Scheduled Monument



Back Street, Wendover

A1211 (10) Wellwick Farm, Wendover

HISTORIC ENVIRONMENT

Map 7 : Wendover

Hedgerows within construction corridor

- Pre-1870
- Recent

Trees within construction corridor

- Truly ancient, valuable or potentially interesting (Defra methodology)

Routeways

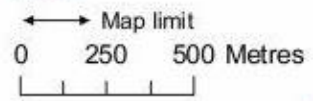
- Pre 18th Century
- 18th 19th Century
- 20th Century

Listed Buildings

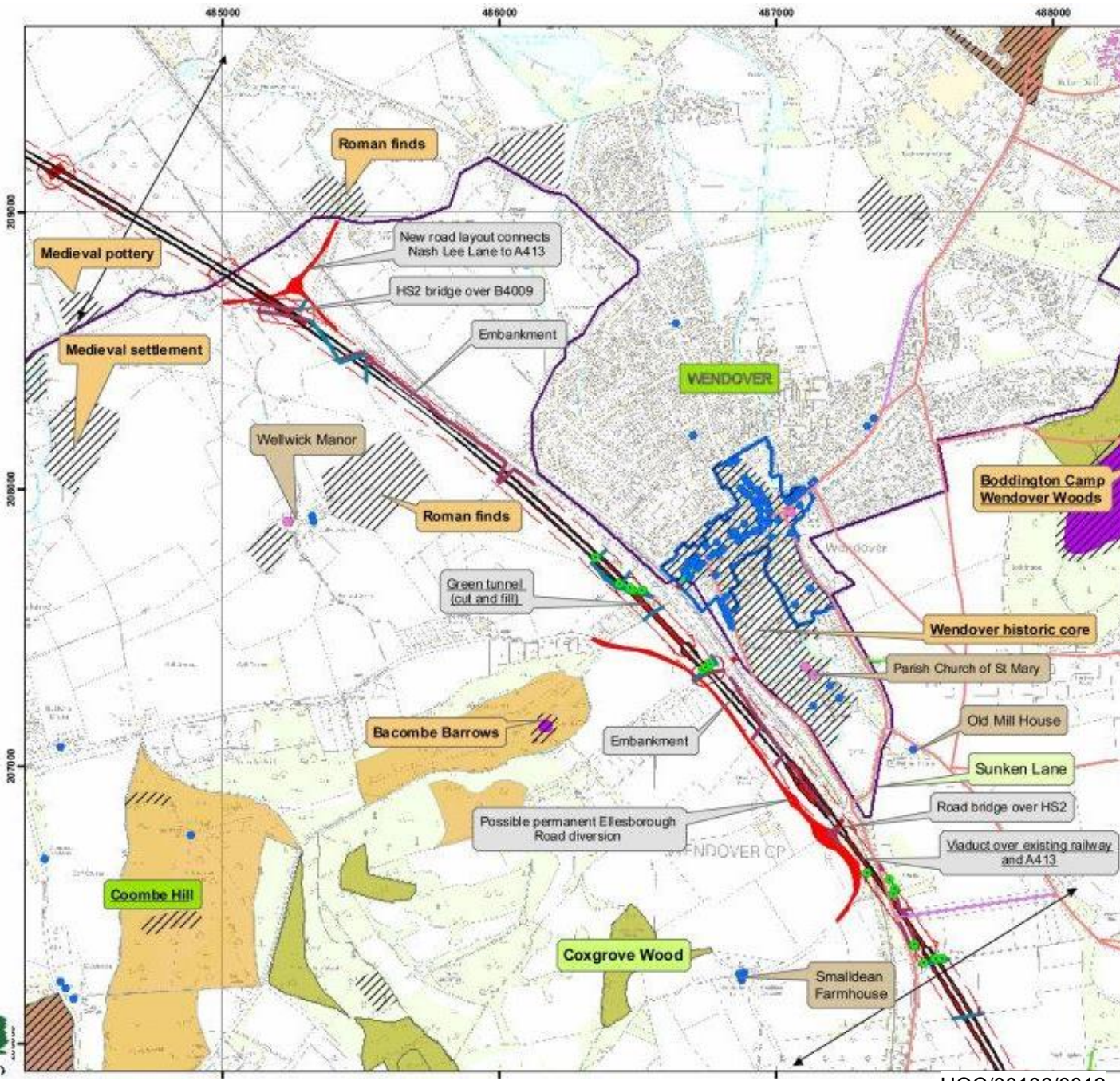
- I
- II*
- II
- Archaeological Notification Areas
- Scheduled Monument
- Registered Parks and Gardens
- Conservation Areas
- Ancient woodland
- Registered Common land
- Chalk Downland

(Not all categories will be found on every map)
Underlined text denotes link to photo

- Chiltern AONB Boundary
- HS2 route plus earthworks
- HS2 structures
- HS2 structures plus 30m
- HS2 30m buffer



© Crown copyright and database rights 2011 Ordnance Survey



A1211 (11)

HOC/00106/0012

An aerial photograph of St Mary's church, a large stone building with a prominent square tower and a long nave. The church is surrounded by lush green trees and a well-maintained lawn. A paved path leads from the right side towards the church. The overall scene is bright and clear, suggesting a sunny day.

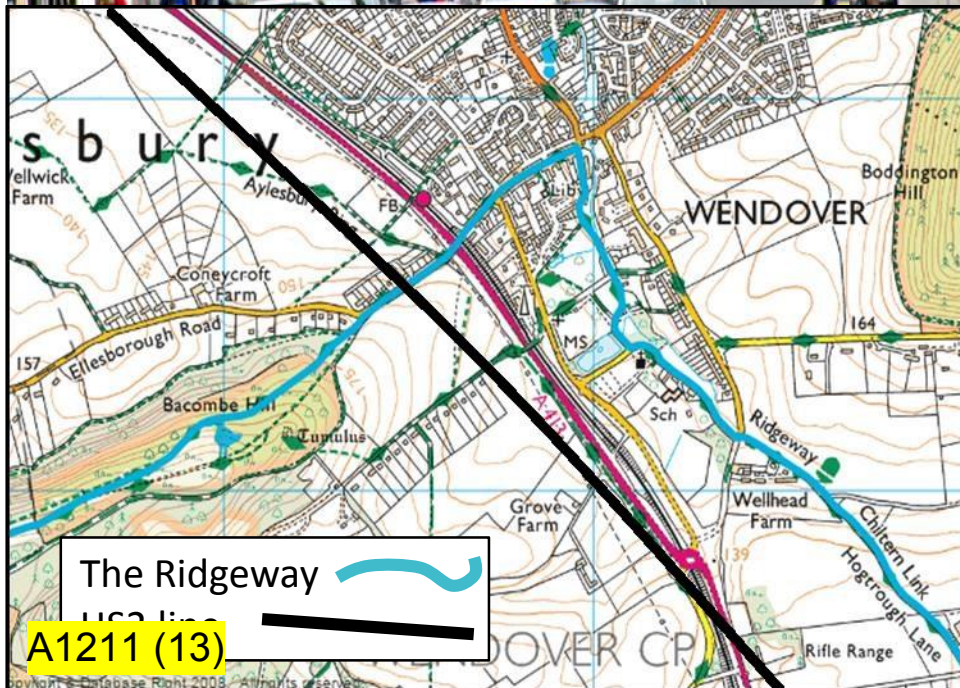
St Mary's

- St Mary's is used by many groups
- For community activities as well as religious services
- Recently refurbished
- 70 dB peak outside, 46 dB inside
- Too loud to continue to use as a music, concert venue
- HS2 looking at insulation
- Does not solve the churchyard issue

Tourism

- Wendover has a high number of tourists
 - Wendover Woods 300,000 pa
 - Combe Hill 100,000
 - RAF Halton Graduations 10,000
 - Ridgeway walkers 56,000
- The economic value is assessed as £16M
- Wendover has a lot of cafes, pubs, restaurants, high end shops and antique shops to cater for tourists
- The Ridgeway goes along the High St and past St Mary's
- Any disruption to how they get here, or their enjoyment while they are here, will cause them to stay away

The local impact will be high



Property Blight

MATT

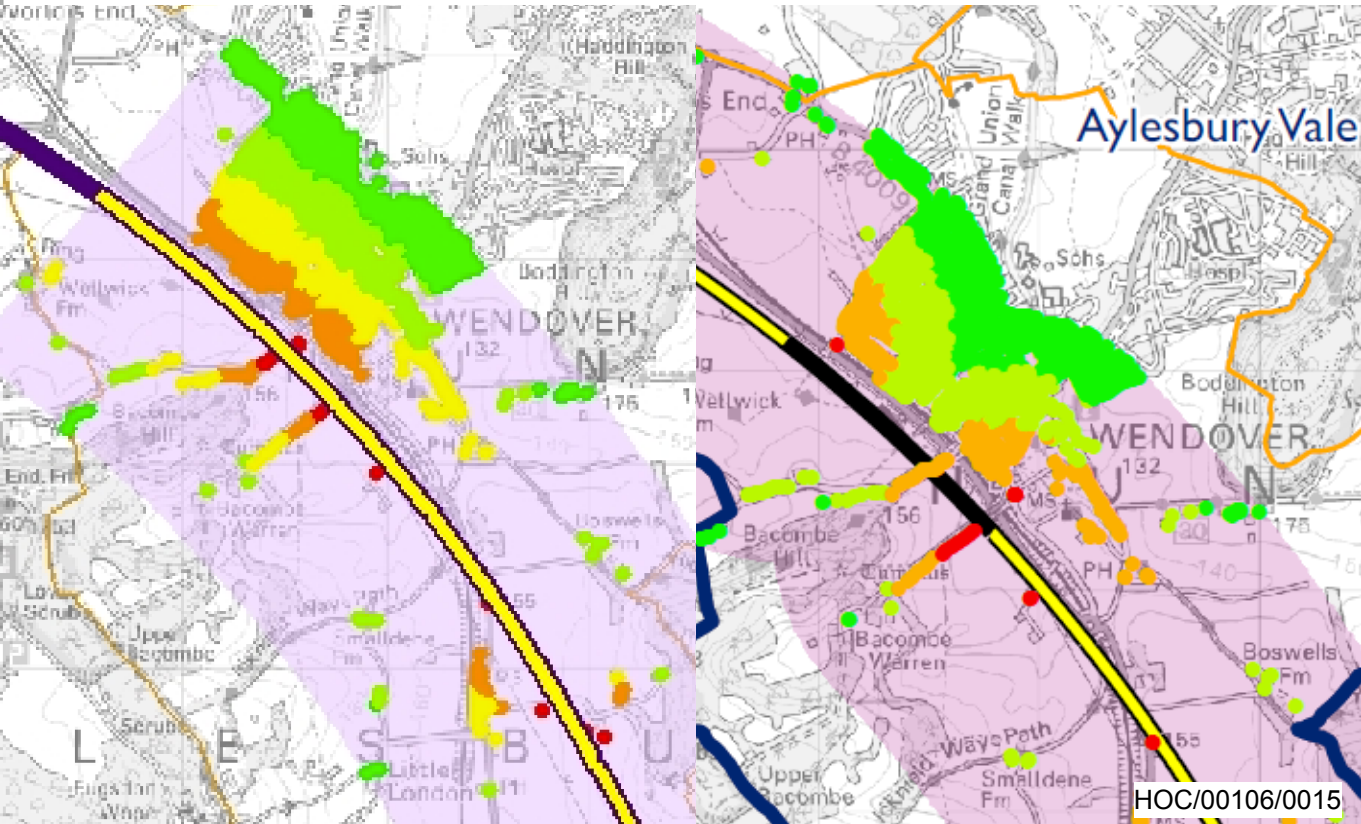


'Great news! HS2 is going through our garden – our property will be worthless'

A1211 (14)

Construction Blight

Green Tunnel Blight



Health – Construction Phase

- Interruption to tourism
- Whole generation affected
- Increase in social isolation – traffic delays
- Chalk dust – copd/asthma
- Age related lifestyle – retiring or staying for a long time not so possible
- Deaf people affected disproportionately

Health - Operational Phase

- Effects from night time noise
- Health effects from property blight
- Link with noise-stress- obesity (see swedish report published in BMJ)
- Large cost to the health and wellbeing of residents living with 1km of proposed exposed section of line



Chiltern Way Federation

Wendover House School

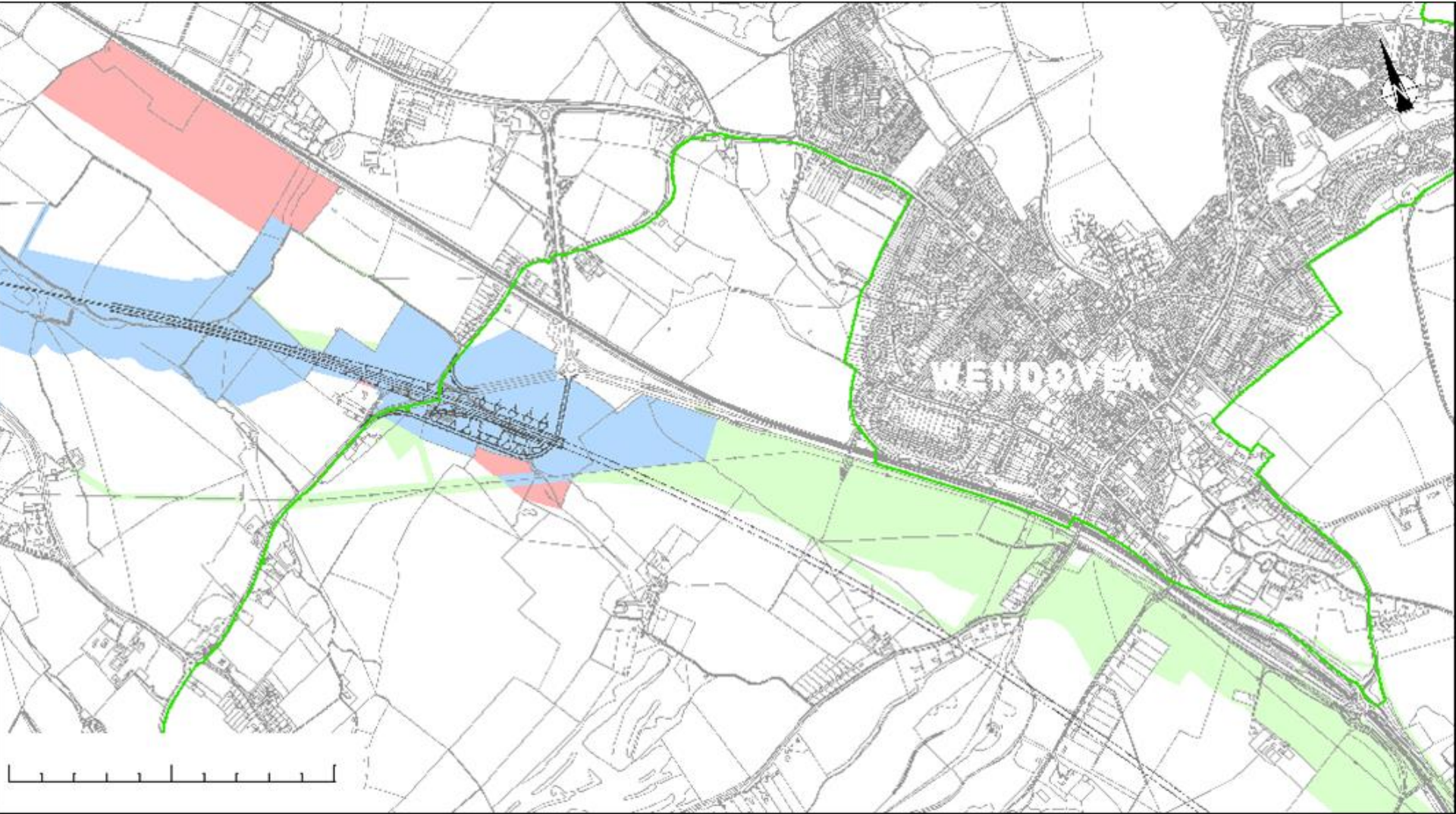
Specialist secondary school for pupils with social, emotional, communication and interaction difficulties.

Impact of HS2 on Wendover House

- The proximity of HS2 will impact on the pupils use of the playing fields
- The importance of outside spaces not being recognised
- The construction site will be a constant distraction
- Traffic congestion during construction will cause significant problems to pupils and staff
- Traffic congestion will hamper Emergency Services
- A magnificent school achieving life-changing results for vulnerable young people. It has a dedicated staff and excellent facilities. It must be allowed to continue.

These risks must be fully mitigated

CLT Construction Camp



Blue = existing land take
Green = released land take

A1214 (7) new land take for railhead

By comparison the CLT additional land take is quite modest